



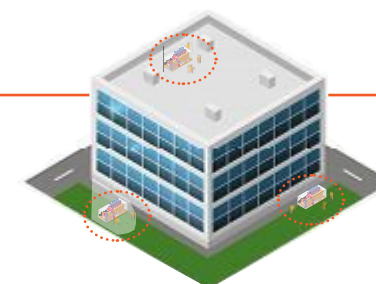
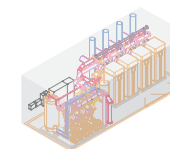
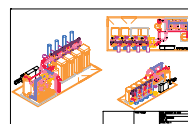
FOLLOW THE LOGIQ

"PLUG-AND-PLAY" ENCLOSURES

Mechanical and boiler systems utilizing a "PLUG-AND-PLAY" ENCLOSURE deliver faster overall completion, less time on site, and maximum efficiency. This modular approach simplifies replacements, upgrades, and new construction.



ONLY 7-9 WEEKS
ON-SITE
VS.
6-9 MONTHS
CONVENTIONAL



1 MODLOGIQ customizes enclosure to fit system configuration designed by mechanical contractor

2 MODLOGIQ ships pre-configured enclosure to mechanical contractor plant or job site (depending on project)

3 Mechanical contractor fabricates system inside the enclosure and prepares for site connections

4 Module installs inside, outside or rooftop (depending on project design) in just 1 day typically

SCHEDULE ACCELERATION

CUSTOMIZED TO YOUR SPECS

Our "PLUG-AND-PLAY" ENCLOSURES satisfy common specifications, structural requirements and building codes. Then we rapidly customize each one to fit your specific project and mechanical system design.

NEW SYSTEM IN WEEKS, NOT MONTHS

Off-site construction of the "PLUG-AND-PLAY" ENCLOSURE and fabrication of the mechanical system can take place at the same time as site development. This reduces total-time-on-site to just 7-9 weeks. That's 70% less than the typical 6-9 months for conventional construction.

LEAST SITE IMPACT

YOUR CUSTOMERS AVOID DISRUPTION

For planned replacements and upgrades, customers can continue to operate their existing system while the new system is being completed. Upon installation—which typically takes just 1 day—they simply switch over. Removal of the old system can proceed without interrupting operations.

COST CERTAINTY

FASTER ROI + OPERATIONAL BENEFITS

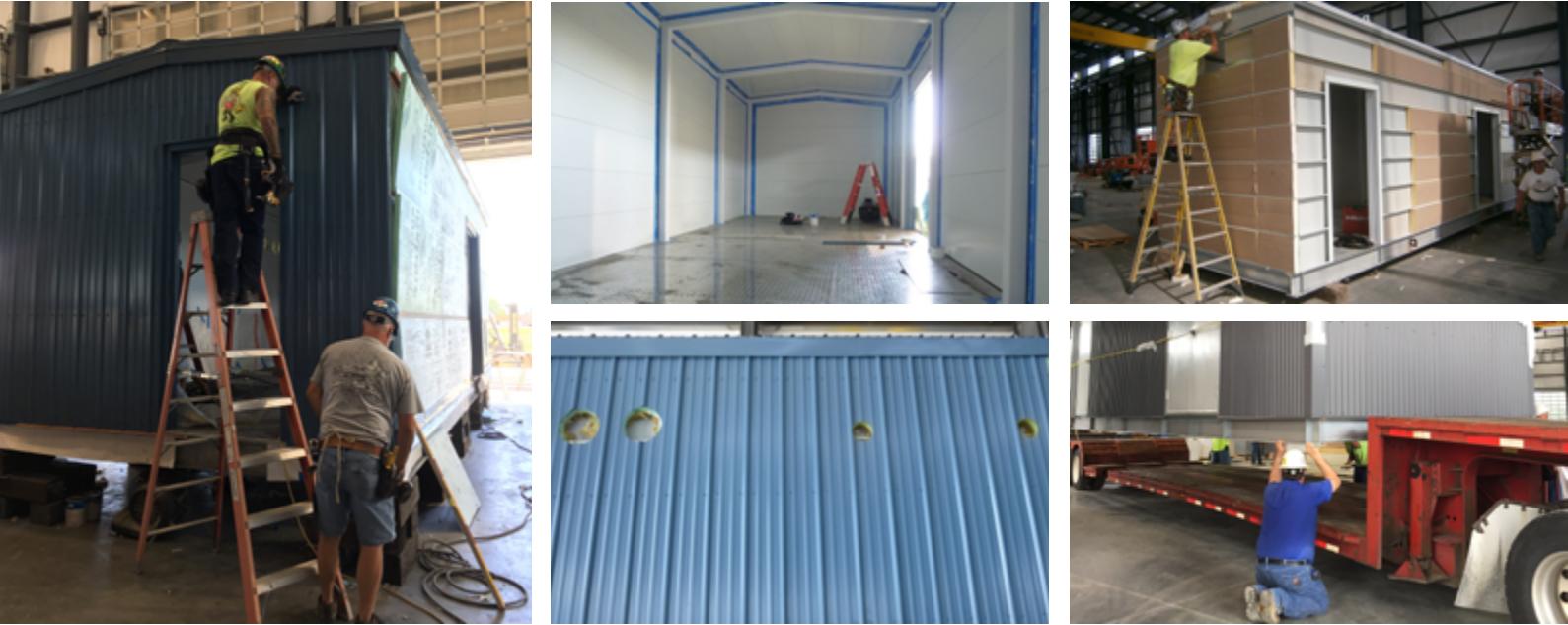
"PLUG-AND-PLAY" ENCLOSURES are considered manufactured products. This allows mechanical contractors to squeeze more capacity into a smaller footprint. Add in the interior square footage customers can reclaim plus savings from today's energy-efficient systems, and payback can occur up to 30% sooner than with the conventional approach.



FOLLOW THE LOGIQ

GIVE CUSTOMERS MORE VALUE

“PLUG-AND-PLAY” ENCLOSURES are custom built to your specs and then delivered to your plant or the job site for fabrication. Welded, structural steel frames and diamond plate flooring deliver quality and durability.



APPLICATIONS

- Replacement
- Upgrade
- Supplemental Capacity
- New Construction
- Abandon in Place
- Asbestos Challenges
- Demolition Issues
- Sustained Operations

RUGGED QUALITY

Unlike corrugated shacks or wood frame outbuildings, “PLUG-AND-PLAY” ENCLOSURES are built to last multiple lifetimes. They feature welded steel frames, reinforced diamond plate flooring, double steel doors, and other quality features that can withstand the harshest conditions.

YOUR CUSTOMERS AVOID DISRUPTION

With “PLUG-AND-PLAY” ENCLOSURES, up to 95% of work can be completed off-site. This dramatically reduces traffic at the site and minimizes laydown yard requirements. Plus, it eliminates outages due to demolition of existing systems. It all adds up to greater safety and less disruption for your customers and their staff, students, doctors, patients, vendors and others.

SHORTEN SCHEDULES

With the conventional approach to renovation, an existing system often must be removed before other work can begin. With new construction, site development has to be completed before fabrication and installation of the mechanical system can start. “PLUG-AND-PLAY” ENCLOSURES avoid that sequential process. Construction, fabrication and demolition can take place independently and simultaneously, greatly reducing time on site.

PROJECT PROFILE

Delaware Department of Transportation



FABRICATION PARTNER
Worth and Company

SCHEDULE
9 weeks

SIZE
10 w x 30 l x 10 h
1.6 Million BTUs

INSTALLATION
1-day

CHALLENGE

- Accelerate schedule so system ready at same time as remodel completed
- Free up interior space, minimize letdown time

SOLUTION

- Completed 100% off-site for rooftop installation

SUCCESS

- Met aggressive schedule, installed on rooftop in just 1-day with virtually no letdown
- Reclaim interior space when old boiler removed